

陶亞倫

1966 生於台北·台灣

學歷

1999 國立臺南藝術大學 造形藝術研究所碩士

1993 國立臺灣師範大學 美術學系學士

教職

2014- 國立政治大學傳播學院專任副教授

2007- 2013 國立台北藝術大學新媒體藝術學系專任副教授

2006 國立台南藝術大學造形藝術研究所兼任助理教授

2003-2007 國立台北藝術大學科技藝術研究所兼任助理教授

2002-2007 實踐大學通識教育中心兼任助理教授

2002 國立台北藝術大學科技藝術研究所客座教授

2000-2002 實踐大學媒體傳達設計系專任講師

1999 國立嘉義大學美術系兼任講師

駐村

2003 芬蘭赫爾辛基北歐當代藝術中心駐場藝術家

2000 1a space 藝術空間駐場藝術家

1999 美國舊金山赫德蘭藝術中心駐村藝術家

美國紐約亞洲文化協會進駐藝術家

1998 西帖藝術村駐村藝術家

台南 - 波士頓藝術家交流計劃駐村藝術家

經歷

2013 中華民國視覺藝術聯盟 監事

- 2011 中華民國視覺藝術聯盟 理事
- 2009 中華民國公共藝術教育學會 理事
- 2007 中華民國視覺藝術聯盟 理事
- 國立台北藝術大學 藝術與科技中心 數位藝術實驗室主持人
- 2006 中華民國公共藝術教育學會 常務理事

個展

- 2018 「聖塔菲 - 國際新媒體藝術節」, 聖塔菲, 美國
- 2016 「時間全景」, 双方藝廊, 台北, 台灣
- 2015 「幻滅中的幻滅」, 伊通公園畫廊, 台北, 台灣
- 2013 「消失的主體」, VT 非常廟藝術空間, 台北, 台灣
- 2010 「切不開的表面」, 百藝畫廊, 台北, 台灣
- 2009 「陶亞倫個展」, 林茲 OK Center, 奧地利
- 「終結歷史之光」, 台北數位藝術中心, 台北, 台灣
- 「電子肌膚」, 關渡美術館, 台北, 台灣
- 2003 「陶亞倫個展」, 芬蘭赫爾辛基, 北歐當代藝術中心, 芬蘭
- 「意識真空」, 伊通公園, 台北, 台灣
- 2000 「黑--陶亞倫個展」, 台北市立美術館, 台北, 台灣
- 「線性空間--陶亞倫裝置藝術作品展」, 視覺藝術中心, 香港, 中國
- 1999 「陶亞倫個展」, 赫德蘭藝術中心, 舊金山, 美國

聯展

- 2018 「定製真實:數位藝術之魅」, 國立台灣美術館, 台中, 台灣
- 「第 9 屆馬德歷現代數位科技影音藝術節」, 馬德里, 西班牙
- 2016 「物·理」, 台北市立美術館, 台北, 台灣
- 「變材無礙 - 當代媒材與表現」, 高雄市立美術館, 台北, 台灣

灣

- 「界域之外 - 當代光影藝術創作展」，台灣工藝研究發展中心，台北，台灣
- 2015 「我倆之眼」，雙方藝廊，台北，台灣
- 「LIGHT INTERDICTION」，PS ART SPACE (PSAS) ，澳洲
- 「inToAsia: TBA Festival 2015」，The Sylvia Wald and Po Kim Art Foundation，紐約
- 2013 「交互視象」，國立台灣美術館，台北，台灣；中國美術館，北京，中國
- 「種子計劃」，立階文創館，台北，台灣
- 2012 「粉樂町」，富邦藝術基金會，台北，台灣
- 「創作者的對話」，關渡美術館，台北，台灣
- 2011 「催眠術」，國家藝術園區美術館，新竹，台灣
- 「花蓮石雕藝術季」，花蓮縣政府，花蓮，台灣
- 2010 「感官拓普-台灣當代藝術」，廣東美術館，廣東，中國
- 「他者測量-台灣當代藝術展」，北京索卡藝術中心，北京，中國
- 國
- 「雙盲-臨床實驗」，誠品畫廊，台北，台灣
- 「新竹玻璃國際藝術節」，新竹市文化局，新竹，台灣
- 「人性迷宮」，臺北市立美術館，台北，台灣
- 2009 「超響」，台北數位藝術中心，台北，台灣
- 「江湖十年」，臻品藝術中心，台中，台灣
- 「 聲聲不息」，百藝畫廊，台北，台灣
- 2008 「趨近」，MOT 畫廊，台北，台灣
- 「感官拓普 -台灣當代藝術」，光州市立美術館，光州，韓國
- 2007 「深呼吸」，台北索卡藝術中心，台北，台灣
- 「深呼吸」，北京索卡藝術中心，北京，中國

- 「台澳新媒體藝術展」，關渡美術館，台北，台灣
- 2006 「空場」，關渡美術館，台北，台灣
- 「慢」，台北當代藝術館，台北，台灣
- 2005 「魔中膜」，台北當代藝術館，台北，台灣
- 「City Nwt Asia 2005」，首爾市立美術館，首爾，韓國
- 2004 「第二屆台新藝術獎 視覺藝術 TOP 7 入圍特展」，新光三越 A9 館，台新藝術，台北，台灣
- 「媒體痙攣」，Co4 台灣前衛文件展，大趨勢畫廊，台北，台灣
- 2003 「Light Festival」，芬蘭赫爾辛基，北歐當代藝術中心，芬蘭
- 「藝術與科技展」，國立成功大學藝文中心，台北，台灣
- 「恍如 如恍」，台北國際藝術村，台北，台灣
- 2002 「台灣當代藝術全集」，鳳甲美術館，台北，台灣
- 2001 「粉樂町 - 台灣當代藝術展」，富邦藝術基金會，台北，台灣
- 「第一屆台灣當代雕塑大展」，國立台灣藝術大學，台北，台灣
- 2000 「歸零」，台北市立美術館，台北，台灣
- 「水的威脅」，台北市立美術館，台北，台灣
- 1999 「磁性書寫-念念之間紙上作品展」，伊通公園，台北，台灣
- 「面對面-台灣當代藝術展」，黃金海岸市立美術館、橘市美術館、坎培拉 Drill Hall 美術館、雪梨大學美術館、墨爾本皇家科技學院美術館，澳洲；Aden 美術館，威靈頓，紐西蘭
- 「局部灌漿 - 冷熱交替的文化成型作用。帝門藝術教育基金會典藏巡迴展」，山美術館、靜宜大學、中央大學、清華大學、成功大學，台灣
- 「時間移民-跨世紀科技藝術展」，台北藝廊，紐約，美國
- 「李仲生基金會現代繪畫創作獎」，皇冠藝術中心，台北，台灣
- 1998 「兩岸新聲當代畫語：台北、香港、上海藝術交流展」，

香港藝術節·香港藝術中心·香港·中國；國立台灣藝術教育館
中正藝廊·台北·台灣

「凝視與形塑 後二二八世代的歷史觀察」·臺北市立美術館·
台北·台灣

「洞念」·前藝術·台北·台灣

「台北市第 25 屆美展」·台北市立美術館·台北·台灣

「台灣藝術家聯展」·米蘭國立藝術學院·米蘭·義大利

「嘉義藝術創作新生代聯展」·嘉義縣立文化中心·嘉義·台灣

「化外之境」·帝門藝術中心·台北·台灣

「內明」·鹽埕畫廊·高雄·台灣

「草山文化行館裝置展」·台北市文化基金會·台北·台灣

「邁向 2000—亞洲文化協會受獎人近作展」·菲律賓文化中
心·馬尼拉

「台灣大學校園環境藝術展」·永豐餘藝術事業籌備處·台北·
台灣

1997 「台北市第 24 屆美展」·台北市立美術館·台北·台灣

「烏山頭聯展」·國立台南藝術學院藝廊·台南·台灣

「河流新亞洲藝術·台北對話」·台北縣美展·台北縣立文化中
心·台北·台灣

「我在嘉義」·嘉義市立文化中心·嘉義·台灣

1996 「現代藝術新觸角聯展」·嘉義市立文化中心·嘉義·台灣

獲獎

2018 獲 第九屆 MADATAC 馬德里現代數位科技影音藝術節最佳新媒
體藝術裝置獎 / 作品(Prado1·2·3) (全景敞視、時間維度、
鏡中鏡外)

2016 獲國立台灣美術館科技融藝跨界創作補助計畫首獎 / 作品〈械動
影〉

- 獲國家文化藝術基金會視覺藝術類獎助
- 2015 獲國立台灣美術館科技融藝跨界創作補助計畫首獎 / 作品〈出夢入夢〉
- 獲國家文化藝術基金會視覺藝術類獎助
- 2003 獲國家文化藝術基金會視覺藝術類獎助
- 1999 獲李仲生基金會 - 現代繪畫創作獎
- 1998 獲法國巴黎國際藝術村工作室獎學金
- 獲台南 - 波士頓藝術家交流計畫
- 獲美國亞洲文化協會 台灣獎助計畫
- 1997 獲帝門藝術教育基金會 師大附中美術班 駐校藝術家計畫
- 獲台北市第 24 屆美展-台北獎
- 獲台北縣美展-台北縣政府獎

評審

- 2015 國家文藝家金會 美術類補助，審查委員，台灣
- 台北市文化局 美術類補助，審查委員
- 台北市立美術館，典藏審議委員，台灣
- 高雄市立美術館，典藏審議委員，台灣
- 國立台灣美術館 全國美展，評審委員，台灣
- 國立台灣美術館 數位藝術創作案，評審委員，台灣
- 淡海輕軌捷運線 公共藝術案，執行小組，台灣
- 台北捷運線頂埔站 公共藝術案，評審委員，台灣
- 美國亞洲文化協會 台灣獎助計畫，評審委員，台灣
- 2013 台北市立美術館，典藏審議委員，台灣
- 台北市文化局 美術類補助，審查委員，台灣
- 高雄市立美術館，典藏審議委員，台灣
- 台北高等法院公共藝術案，執行小組，台灣

- 高雄市立美術館高雄獎，評選委員，台灣
- 2012 交通部公路總局，公共藝術徵選小組，台灣
- 永和市行政大樓公共藝術案 執行小組，台灣
- 高雄市立美術館高雄獎，評選委員，台灣
- 美國亞洲文化協會台灣獎助計畫，評審委員，台灣
- 2011 中強光電藝術基金會，顧問，台灣
- 台灣藝術大學，公共藝術徵選小組，台灣
- 2010 高雄市立美術館高雄獎，評選委員，台灣
- 高雄市立美術館，典藏審議委員，台灣
- 2009 桃源創作獎，評選委員，台灣
- 2009 第四屆 KT 科技藝術獎，評審委員，台灣
- 2008 第三屆基隆市行政大樓公共藝術案，執行小組，台灣
- 台北縣金山國小公共藝術案，執行小組，台灣
- 永和市行政大樓公共藝術案，執行小組，台灣
- 2008 台北縣八里垃圾焚化廠公共藝術案，執行小組，台灣
- 2008 第三屆台北數位藝術節，評審委員，台灣
- 2008 第三屆 KT 科技藝術獎，評審委員，台灣
- 台北縣三和國中公共藝術，執行小組，台灣
- 2007 台北市防災指揮中心公共藝術案，執行小組，台灣
- 2007 第二屆台北數位藝術節，評審委員，台灣
- 2007 第二屆 KT 科技藝術獎，評審委員，台灣
- 國立台南藝術大學校長遴選委員會，委員，台灣
- 國立新店高級中學公共藝術，執行小組，台灣
- 2006 2006 第一屆台北數位藝術節，評審委員，台灣
- 中央研究院公共藝術案，執行小組，台灣
- 台北市麗山國小公共藝術案，執行小組，台灣
- 陸軍專科學校公共藝術案，評審委員，台灣

- 國立體育學院公共藝術案，評審委員，台灣
- 2005 中山科學研究院公共藝術案，評審委員，台灣
- 桃園縣客家文化館公共藝術案，評審委員，台灣
- 2004 台北市文化局公共藝術研習案，執行小組，台灣
- 2003 台北市北投垃圾焚化廠公共藝術案，評審委員，台灣
- 三軍總醫院正子實驗室公共藝術案，評審委員，台灣

公共藝術作品

- 2014 「國道高速公路泰安服務區，公共藝術」
- 2011 「台北服飾文化館，公共藝術」
- 2010 「桃園國際機場，公共藝術」
- 2008 「機場捷運三重站，公共藝術」
- 「國立台灣歷史博物館，公共藝術」
- 「台北市捷運南港站，公共藝術」
- 「台北市長安國小，公共藝術」
- 2007 「第一屆公共藝術獎」
- 2006 「台中市中區國稅局，公共藝術」
- 「台北市第三屆公共藝術節」
- 2004 「國立中央圖書館台灣分館，公共藝術」
- 2003 「台北市捷運板橋站，公共藝術」
- 「南港軟體工業園區，公共藝術」
- 2001 「台北市立建成國民中學，公共藝術」
- 1998 「台南 - 波士頓藝術家交流計劃」，台南市文化局
- 「美國亞洲文化協會，台灣獎助計畫」赴紐約及舊金山赫德蘭藝術中心

公共典藏

- 2016 交通部國道高速公路局典藏 / 作品〈幸福驛站〉

- 國立臺灣美術館典藏，台中，台灣 / 作品〈生滅〉
- 2015 台北市立美術館典藏，台北，台灣 / 作品〈留白〉
- 國立臺灣美術館典藏，台中，台灣 / 作品〈自我的顯像儀〉
- 國立臺灣美術館典藏，台中，台灣 / 作品〈幻滅 no.1〉
- 國立臺灣美術館典藏，台中，台灣 / 作品〈幻滅 no.2〉
- 國立臺灣美術館典藏，台中，台灣 / 作品〈幻滅 no.3〉
- 國立臺灣美術館典藏，台中，台灣 / 作品〈幻滅 no.4〉
- 國立臺灣美術館典藏，台中，台灣 / 作品〈幻滅 no.5〉
- 國立臺灣美術館典藏，台中，台灣 / 作品〈幻滅 no.6〉
- 2014 胡朝聖先生典藏 / 作品〈空相〉
- 2013 台北市文化局典藏，台北，台灣 / 作品〈迎春風〉
- 2012 桃園機場公司典藏，桃園，台灣 / 作品〈繁花〉
- 國立台灣歷史博物館典藏，台北，台灣 / 作品〈逐浪海上風 腳踏鯤鯨地〉
- 國立台灣歷史博物館典藏，台北，台灣 / 作品〈遠古台灣 未來之島〉
- 國立台灣歷史博物館典藏，台北，台灣 / 作品〈和樂〉
- WHERE?，台灣 / 作品〈零度意識〉
- 高雄市立美術館典藏，高雄，台灣 / 作品〈旋轉光牆〉
- 高雄市立美術館典藏，高雄，台灣 / 作品〈黑色 2 號〉
- 高雄市立美術館典藏，高雄，台灣 / 作品〈光膜 2〉
- 2009 私人典藏 / 作品〈旋轉光牆〉
- 2008 台北市捷運南港站典藏，台北，台灣 / 作品〈捷運 碼頭〉
- 台北市長安國小典藏，台北，台灣 / 作品〈親愛的 我變大了〉
- 2007 台中市中區國稅局典藏，台中，台灣 / 作品〈發光體〉
- 台北市馬偕紀念醫院典藏，台北，台灣 / 作品〈魚〉
- 2006 台北捷運板橋站典藏，台北，台灣 / 作品〈進化的軌跡〉

- 2005 國立中央圖書館台灣分館典藏，台北，台灣 / 作品〈美麗之島〉
- 2004 南港軟體工業園區典藏，台北，台灣 / 作品〈光體〉
關渡美術館典藏，台北，台灣 / 作品〈意識真空〉
- 2002 台北市立建成國中典藏，台北，台灣 / 作品〈Take a Break〉
- 2000 林學熙先生購藏 / 作品〈黑色一號〉
高雄市立美術館典藏，高雄，台灣 / 作品〈鬆口氣〉
- 1999 國家藝術園區美術館，新竹，台灣 / 作品〈自我意識 I〉
國家藝術園區美術館，新竹，台灣 / 作品〈自我意識 II〉
- 1997 台北市立美術館典藏，台北，台灣 / 作品〈隱性〉

Tao Ya-Lun

DOUBLE SQUARE GALLERY 双方藝廊

No.28, Ln. 770, Bei'an Rd., Zhongshan Dist., Taipei City 104, Taiwan (R.O.C.) 台灣台北市中山區北安路770巷28號 T +886 2 8501-2138 F +886 2 8501-2338
www.doublesquare.com.tw

Tao Ya-Lun

1966 Born in Taipei, Taiwan. Lives and works in Taipei.

Education

1999 MFA, Institute of Plastic Art, Tainan National University of The Arts, Taiwan

1993 BA, Department of Fine Arts, National Taiwan Normal University, Taiwan

Teaching

2014 *Associate Professor*, College of Communication, National Chengchi University, Taipei, Taiwan

2007-2013 Assistant professor, Department of New Media Art, Taipei National University of the Arts, Taipei, Taiwan

2006 Assistant professor, Graduate Institute of Plastic Arts, Tainan National University of the Arts, Taipei, Taiwan

2003-2007 Assistant professor, Graduate Program of Arts and Technology, Taipei National University of the Arts, Taipei, Taiwan

2002-2007 Assistant professor, Generation Education Center, Shih Chien University, Taipei, Taiwan

2002 *Visiting Professor*, Department of New Media Art, Taipei National University of the Arts, Taipei, Taiwan

2000-2002 Lecturer, Department of Communications Design, Shih Chien University, Taiwan

1999 Lecturer, Department of Fine Arts, National Chia-Yi University, Taipei, Taiwan

Artist Residency

2003 Artists in Residence, Program Nordic Institute for Contemporary Art, Helsinki Finland

- 2000 Artists in Residence Program, 1a space, Hong Kong
- 1999 Artists in Residence, New York and Headland Center for the Arts,
Sausalito, California, USA
Asian Cultural Council, New York
- 1998 Artists in Residence, Cité Internationale des Arts, Paris, France
Artists in Residence, Boston - Tainan Cultural Exchange Program, Boston
City Hall, USA

Related Experiences

- 2013 *Supervisors*, Association of the Visual Arts in Taiwan, Taipei, Taiwan
- 2011 *Director*, Association of the Visual Arts in, Taiwan, Taipei, Taiwan
- 2009 *Director*, The Educational Development Association for Public Art,
Taipei, Taiwan
- 2007 *Director*, Association of the Visual Arts in Taiwan, Taipei, Taiwan
Digital Art Lab hosts, Center for Art and Technology, Taipei National
University of the Arts, Taipei, Taiwan
- 2006 The Educational Development Association for Public Art, ROC, Executive
Director

Solo Exhibition

- 2016 *Time Panorama*, Double Square, Taipei, Taiwan
- 2015 *vanish into thin air*, IT Park, Taipei, Taiwan
- 2013 *Disappearance of Subject*, VT Artsalon, Taipei, Taiwan
- 2010 *Impenetrable Superficiality Tao Ya-lun Solo Exhibition*, Gallery 100,
Taipei, Taiwan
- 2009 *Tao Ya-lun Solo Exhibition*, OK Center, Linz, Austria
The Light of Historical Ending, Digital Art Center, Taipei, Taiwan
Electronic Skin - An Exhibit of Way, Der-Lor and Tao, Ya-Lun's works,

- Kuandu Museum of Arts, Taipei, Taiwan
- 2003 *Tao Ya-lun Solo Exhibition Nordic Institute for Contemporary Art,*
Helsinki, Finland
- Consciousness in Vacuum,* IT Park Gallery, Taipei, Taiwan
- 2000 *Darkness: Tao Ya-lun Solo Exhibition,* Taipei Fine Arts Museum, Taiwan
Taiwan
- The linear Space: Installation Art Exhibition by Allen Tao,* Visual Arts
Centre, Hong Kong, China
- 1999 *Tao Ya-lun Solo Exhibition,* Headland Center for the Arts, Sausalito,
California, USA

Large Scale New Media Art Project

- 2016 *Psychic of Light,* TAF, Taipei, Taiwan
- Electronic Skin – Future Media Art,* MOCA, Taipei, Taiwan
- 2015 *Dream In Dream Out ,* Songshan Cultural Park, Taipei, Taiwan
- 2005 *Waterside - Taipei Dance Circle + Tao Ya Lun,* City Stage, Taipei/ Chung-
Shan Hall, Taichung/ Art and Culture Center, Kaohsiung, Taiwan

Group Exhibition

- 2018 *Customized Reality: the Lure and Enchantment of Digital Art,* National
Taiwan Museum of Fine Arts, Taichung, Taiwan
- Mazatec09,* Madrid, Spain
- 2017 *Dreaming of Beethoven - VR Interactive Exhibits,* Shanghai Concert Hall,
Shanghai, China
- Perth Fremantle's inaugural,* Perth, Australia
- 2016 *The Way Things Go,* Taipei Fine Arts Museum, Taipei, Taiwan
- Transformation: Contemporary Media and Manifestation,* Kaohsiung
Museum of Fine Arts, Taipei, Taiwan

- Projecting Beyond Media – Contemporary Light Art Exhibition*, National Taiwan Craft Research and Development Institute, Taipei, Taiwan
- 2015 *Our eyes*, Double Square Gallery, Taipei, Taiwan
- LIGHT INTERDICTION*, PS Art Space (PSAS), Fremantle, Australia
- inToAsia: TBA Festival 2015*, The Sylvia Wald and Po Kim Art Foundation, New York, U.S.A.
- 2013 *Inter-Vision*, National Taiwan Museum of Fine Arts, Taipei, Taiwan; The National Art Museum of China, Beijing, China
- Seed Project*, Lead Jade Exhibition Hall, Xinyi, Taipei, Taiwan
- 2012 *Very Fun Park*, Fubon Art Foundation, Taipei, Taiwan
- Creators of Dialogue*, Kuandu Museum of Fine Arts, Taipei, Taiwan
- 2011 *HYPNOTISM*, Art Museum @ The Art Park, Hsinchu, Taiwan
- Hualien International Stone Sculpture Festival*, Hualien County Cultural Affairs Bureau, Hualien, Taiwan
- 2010 *Bodily Perception of Taiwan Contemporary Art*, Guangdong Museum of Art, Guangdong, China
- Measurement of the Other - Contemporary Art from Taiwan*, Soka ArtCenter, 798 Art District, Beijing, China
- Double - Blind Trail*, Eslite Gallery, Taipei, Taiwan
- HSINCHU CITY INT'L GLASS ART FESTIVAL*, Cultural Affairs Bureau, Hsinchu, Taiwan
- Humanity in Ambiguities: Permanent Collection of TFAM*, TFAM, Taipei, Taiwan
- 2009 *Tran Sonic 2009*, Digital Art Center, Taipei, Taiwan
- Horizon of Voice*, Gallery 100, Taipei, Taiwan
- Itinerant Years*, Foursquare, Taipei, Taiwan
- 2008 *Bodily Perception of Taiwan Contemporary art*, Gwangju Museum of

- Art, Gwangju, South Korea
- Approaching*, MOT Arts, Taipei, Taiwan
- 2007 *Breathing Deeply*, Soka Art Center, Beijing, China
- Breathing Deeply*, Soka Art Center, Taipei, Taiwan
- Taiwan – Australia New Media Arts Exhibition*, Kuandu Museum of Arts, Taipei, Taiwan
- 2006 *A Dialogue Between Contemporary Art And Contemporary Philosophy*, Kuandu Museum of Arts, Taipei, Taiwan
- Slow Tech*, Museum of Contemporary Art, Taipei, Taiwan
- 2005 *Membrane onto Magic*, Museum of Contemporary Art, Taipei, Taiwan
- City Nwt Asia 2005*, Seoul Museum of Arts, Seoul, Korea
- 2004 *Techno Dream Sphere*, Nan Kang Software Park Public Art Project Media Cramp CO-4 Taiwan avant-garde *documenta*, Main Trend Gallery, Taipei Taiwan
- Taishin Arts Award 2003*, Taishin Bank Foundation For Arts and Culture, Taipei, Taiwan
- 2003 *Light Festival*, Nordic Institute for Contemporary Art, Helsinki, Finland
- Techno-Art Arts Center of National Cheng Gong University, Taipei, Taiwan
- Artists-in-Residence Exhibition*, Taipei International Arts Village, Taipei, Taiwan
- 2002 *Oeuvre of Contemporary Art in Taiwan*, Feng Jia Fine Arts Museum, Taipei, Taiwan
- 2001 *Very Fun Park*, Fubon Art Foundation, Taipei, Taiwan
- Contemporary Sculpture*, National Taiwan University of the Arts, Taipei, Taiwan
- 2000 *Zero-in*, Taipei Fine Arts Museum, Taipei, Taiwan

- Fear of Water*, Taipei Fine Arts Museum, Taipei, Taiwan
- 1999 *Magnetic Writing/Marching Ideas*, Works on Paper, IT Park Gallery, Taipei, Taiwan
- Face To Face : Contemporary Art from Taiwan*, Gold coast City Art Gallery, Orange Regional Gallery, Drill Hall Gallery, Sydney College of the Arts Gallery, Royal Melbourne Institute of Technology Gallery, Australia; Aden Gallery, Wilington, New Zealand
- The Shaping of Cultural In Turmoil Dimension Endowment of Art*, Mountain Arts Museum, Kaohsiung, Taiwan; Providence University, Taichung, Taiwan; National Central University, Taoyuan, Taiwan; National Tsing Hua University, Hsinchu Taiwan; National Cheng Kung University, Tainan, Taiwan
- Time Migration : Techno-Art For The New Millennium*, Taipei Gallery, New York, U.S.A
- The Contemporary Painting Creation Prize Exhibition*, Crown Arts Center, Taipei, Taiwan
- 1998 *New Voices : Contemporary Art Dialogue Among Taipei, Hong Kong and Shanghai*, Hong Kong Arts Center, Hong Kong, China; National Taiwan Arts Education Institute, Taipei, Taiwan
- Reflection and Reconsideration 2 . 28 Commemorative Exhibition*, Taipei Fine Arts Museum, Taipei, Taiwan
- 4 Artists Exhibition*, Front Gallery, Taipei, Taiwan
- The 25th Taipei Annual Art Competition*, Taipei Fine Arts Museum, Taipei, Taiwan
- Artisti di Taiwan*, Accademia di Belle Arti di Brera, Milano, Italy.
- Chiayi Young Arts Joint Exhibition*, Chiayi County Performing Arts Center, Chaiyi, Taiwan

- Beyond The Substantial World*, Dimensions Art Gallery, Taipei, Taiwan
- The Tsao Shan Cultural Villa*, Taipei Cultural Foundation, Taipei, Taiwan
- Fast Forward to 2000*, Recent Works by Asian Cultural Council Grantees, Cultural Center of the Philippines, Manila, Philippines
- Brightness inside*, Crane Gallery, Kaohsiung, Taiwan
- Exhibition of NTU campus environment*, Yong Feng Yu Preparatory office of arts, Taipei, Taiwan
- 1997 *The 24th Taipei Annual Art Competition*, Taipei Fine Arts Museum, Taipei, Taiwan
- U Shan Tou Group Exhibition*, Tainan National College of The Arts, Tainan, Taiwan
- River : New Asian Art A Dialogue In Taipei*, Taipei County Cultural Center, Taipei, Taiwan
- I live in Chia Yi*, Chia Yi City Cultural Center, Chia Yi, Taiwan
- 1996 *Group Exhibition in National Festival of Culture and Arts*, Chia Yi City Cultural Center, Chia Yi, Taiwan

Awards

- 2016 *Psychic of Light*, Cross Disciplinary Digital Art Creative Grant Program Frist Prize, National Taiwan Museum of Fine Arts, Taiwan
Grant, Visual Arts Grants, National Culture and Arts Foundation, Taiwan
- 2015 *Exiting and Entering Dreams*, Cross Disciplinary Digital Art Creative Grant Program Frist Prize, National Taiwan Museum of Fine Arts, Taiwan
Grant, Visual Arts Grants, National Culture and Arts Foundation, Taiwan
- 2003 Grant, Visual Arts Grants, National Culture and Arts Foundation, Taiwan
Taipei County Prize, *River: New Asian Art - A Dialogue In Taipei*, Art Exhibition of Taipei County, Taipei County Cultural Center, Taiwan

- 1999 Grant, Contemporary Painting Creation Prize, Li Chun Shen Foundation, Taiwan
- 1998 Grant for Residency at Cité Internationale des Arts de Paris, Ministry of Education, department of International Education
Grant for Tainan- Boston Artists Exchange Project, Cultural Affairs bureau, Tainan City Government, Taiwan
Taiwan Fellowship Program Asian Cultural Council
- 1997 Dimension Endowment of Art, HSNUArt, Artist in Residence Program, Taipei, Taiwan
Taipei Prize, Taipei Annual Arts Competition, Taipei Fine Arts Museum, Taiwan
Taipei County Government Art Award, River: New Asian Art-A Dialogue in Taipei, Taipei County Art Center, Taiwan

Judging Committee

- 2015 National Culture and Arts Foundation, Art Grant, judging committee, Taiwan
Department of Cultural Affairs, Taipei City Government, Art Grant, judging committee, Taiwan
Taipei Fine Arts Museum, Museum collection committee, Taiwan
Kaohsiung Museum of Fine Arts, Museum collection committee, Taiwan
National Taiwan Museum of Fine Arts, National Art Exhibition, judging committee, Taiwan
National Taiwan Museum of Fine Arts, Digital Art Creation Competition Program, judging committee, Taiwan
Danhai Light Rail MRT, Public Art Project, execution team, Taiwan

- Taipei Metro Dingpu Station, Public Art Project, judging committee,
Taiwan
- Asian Cultural Council, Taiwan Grant Project, judging committee, Taiwan
- 2013 Taipei Fine Arts Museum, judging committee, Taiwan
- Department of Cultural Affairs, Taipei City Government, Art Grant,
judging committee, Taiwan
- Kaohsiung Museum of Fine Arts, Museum collection committee, Taiwan
- Taipei High Administrative Court, Public Art Project, execution team,
Taiwan
- Kaohsiung Museum of Fine Arts, Kaohsiung Awards, judging committee,
Taiwan
- 2012 Directorate General of Highways, Public Art Project, selection team,
Taiwan
- Yonghe District Administration Building, Public Art Project, execution
team, Taiwan
- Kaohsiung Museum of Fine Arts, Kaohsiung Awards, judging committee,
Taiwan
- Asian Cultural Council, Taiwan Grant Project, judging committee, Taiwan
- 2011 Coretronic Culture and Arts Foundation, consultant, Taiwan
- National Taiwan University of Arts, Taiwan Grant Project, selection
team, Taiwan
- 2010 Kaohsiung Museum of Fine Arts, Kaohsiung Awards, judging committee,
Taiwan
- Kaohsiung Museum of Fine Arts, Museum collection committee, Taiwan
- 2009 Taoyuan Creation Awards, judging committee, Taiwan

- 2009 The 4th K. T. Creativity Award, judging committee, Taiwan
- 2008 The 3th Keelung City Administration Building, Public Art Project, execution team, Taiwan
- Taipei County Jinshan Elementary School, Public Art Project, execution team, Taiwan
- Yonghe District Administration Building, Public Art Project, execution team, Taiwan
- 2008 Taipei County Bali Incineration Plant, Public Art Project, execution team, Taiwan
- 2008 The 3th Digital Art Festival Taipei, judging committee, Taiwan
- 2008 The 3th K. T. Creativity Award, judging committee, Taiwan
- Taipei County Sanhe Junior High School, Public Art Project, execution team, Taiwan
- 2007 Taipei City Emergency Operation Center, Taipei City Emergency Operations Center, Public Art Project, execution team, Taiwan
- 2007 The 2th Digital Art Festival Taipei, judging committee, Taiwan
- 2007 The 2th K. T. Creativity Award, judging committee, Taiwan
- Tainan National University of The Arts, Principal selection committee, Taiwan
- New Taipei Municipal Hsin Tien Senior High School, Public Art Project, execution team, Taiwan
- 2006 2006 The 1th Digital Art Festival Taipei, judging committee, Taiwan
- Academia Sinica, Public Art Project, execution team, Taiwan
- Taipei Municipal Lishan Junior High School, Public Art Project, execution team, Taiwan
- Army Academy R.O.C., Public Art Case, Public Art Project, judging committee, Taiwan

- National Taiwan Sport University, Public Art Project, judging committee,
Taiwan
- 2005 National Ching-Shan Institute of Science & Technology, Public Art
Project, judging committee, Taiwan
Taoyuan City Hakka Museum, Public Art Project, judging committee,
Taiwan
- 2004 Department of Cultural Affairs, Taipei City Government, Public Art
Project, execution team, Taiwan
- 2003 Taipei City Beitou Incineration Plant, Public Art Project, judging
committee, Taiwan
Tri-Service General Hospital, Positron Emission Tomography laboratory,
Public Art Project, judging committee, Taiwan

Public Art Collections

- 2014 Public Art at Tai An service area of Taiwan National freeway
- 2011 Public Art at Fashion Institute of Taipei
- 2010 Public Art at Taiwan Taoyuan International Airport
- 2008 Public Art at Taipei Metro Sanchong Station
Public Art at National Museum of Taiwan History
Public Art at Taipei Metro Nankang Station
Public Art at Taipei Municipal Changan Elementary School
- 2006 Public Art at National Taxation Bureau of Taichung
The 3rd Taipei Public Art Festival
- 2004 Public Art at National Taiwan Library
- 2003 Public Art at Taipei Metro Banqiao Station
Public Art at Nankang Software Park
- 2001 Public Art at Taipei Municipal Jian Cheng Junior High School

Permanent Public Collections

- 2016 Taiwan Area National Freeway Bureau, MOTC R.O.C / Artwork
Happiness Rest Area
National Taiwan Museum of Fine Arts, Taichung, Taiwan / Artwork *Birth and Death*
- 2015 Taipei Fine Arts Museum, Taipei, Taiwan / Artwork *State of Mind*
National Taiwan Museum of Fine Arts Collection, Taichung, Taiwan / Artwork *Self Displayer*
National Taiwan Museum of Fine Arts, Taichung, Taiwan / Artwork *Vanish into thin air no.1*
National Taiwan Museum of Fine Arts, Taichung, Taiwan / Artwork *Vanish into thin air no.2*
National Taiwan Museum of Fine Arts, Taichung, Taiwan / Artwork *Vanish into thin air no.3*
National Taiwan Museum of Fine Arts, Taichung, Taiwan / Artwork *Vanish into thin air no.4*
National Taiwan Museum of Fine Arts, Taichung, Taiwan / Artwork *Vanish into thin air no.5*
National Taiwan Museum of Fine Arts, Taichung, Taiwan / Artwork *Vanish into thin air no.6*
- 2014 Sean C.S Hu collection / Artwork *No Appearance*
- 2013 Department of Culture Affairs, Taipei City Government, Taipei, Taiwan / Artwork *Here Comes the Spring Breeze*
Swirling Wall of Light, Kaohsiung Museum of Fine Arts , Kaohsiung , Taiwan

- Consciousness in Vacuum, Kaohsiung Museum of Fine Arts, Kaohsiung ,
Taiwan
- Black N.2, Kaohsiung Museum of Fine Arts, Kaohsiung , Taiwan
- Membrane of Light 2, Kaohsiung Museum of Fine Arts , Kaohsiung ,
Taiwan
- Branded I, Kuandu Museum of Fine Arts, Taipei, Taiwan
- 2012 Taoyuan Airport Corporation, Taoyuan, Taiwan / Artwork *The Flower
Clusters*
- National Museum of Taiwan History, Taipei, Taiwan / Artwork *As our
forefathers row their boats across the sea to Taiwan, a sandbank that
resembles the back of a giant whales is seen from afar.*
- National Museum of Taiwan History, Taipei, Taiwan / Artwork *Primeval
form of Taiwan ; Future of Taiwan*
- National Museum of Taiwan History, Taipei, Taiwan / Artwork *Ethnic
harmony*
- Kaohsiung Museum of Fine Arts, Kaohsiung, Taiwan / Artwork
Unconsciousness
- Kaohsiung Museum of Fine Arts, Kaohsiung, Taiwan / Artwork *Light wall
around*
- Kaohsiung Museum of Fine Arts, Kaohsiung, Taiwan / Artwork *Black II*
- Kaohsiung Museum of Fine Arts, Kaohsiung, Taiwan / Artwork
Membrane of Light 2
- 2009 Private Collection / Artwork *Light wall around*
- 2008 Taipei Metro Nankang Station, Taipei, Taiwan / Artwork *Rapid Transit
Platform, the Transport Dock*
- Taipei Municipal Changan Elementary School, Taipei, Taiwan / Artwork *I*

Am Older Now Dear

- 2007 National Taxation Bureau of Central Area, Ministry of Finance, Taichung,
Taiwan / Artwork *Luminous Object*
Mackay Memorial Hospital, Taipei, Taiwan / Artwork *Fish*
- 2006 Taipei Metro Banqiao Station, Taipei, Taiwan / Artwork *Evolution Orbit*
- 2005 National Taiwan Library, Taipei, Taiwan / Artwork *Island of Beauty*
- 2004 Nankang Software Park, Taipei, Taiwan / Artwork *Light Substance*

Kuandu Museum of Fine Arts, Taipei, Taiwan / Artwork *Sense in a Vacuum*

Consciousness in Vacuum II, Kuandu Museum of Fine Arts , Taipei, Taiwan
- 2002 Taipei Municipal Jian Cheng Junior High School, Taipei, Taiwan / Artwork *Take a Break*
- 2000 Black N.1, private collection by Mr. Lin Xuexi A Sigh of Relief, Kaohsiung Museum of Fine Arts, Kaohsiung , Taiwan
- 1999 Self -Consciousness I Collected by Dimension Endowment of Art

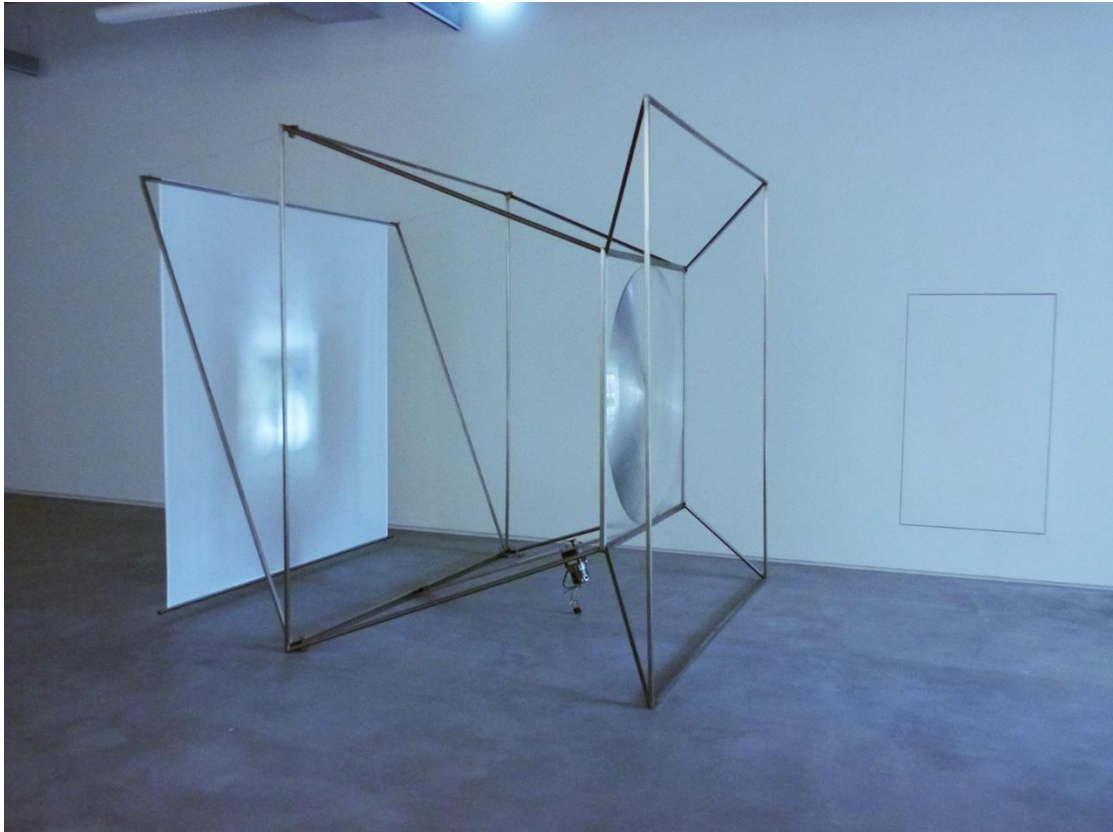
Self- Consciousness II Collected by Dimension Endowment of Art

Black No. 1 Private Collection
- 1998 Take a Break, Private collection
- 1997 Secret Sexuality collected by Taipei Fine Arts Museum

Selected Artworks

DOUBLE SQUARE GALLERY 双方藝廊

No.28, Ln. 770, Bei'an Rd., Zhongshan Dist., Taipei City 104, Taiwan (R.O.C.) 台灣台北市中山區北安路770巷28號 T +886 2 8501-2138 F +886 2 8501-2338
www.doublesquare.com.tw



Dream | Lens, Image | 210 x 200 x 200 cm | 2015

DOUBLE SQUARE GALLERY 双方藝廊

No.28, Ln. 770, Bei'an Rd., Zhongshan Dist., Taipei City 104, Taiwan (R.O.C.) 台灣台北市中山區北安路770巷28號 T +886 2 8501-2138 F +886 2 8501-2338
www.doublesquare.com.tw



Self Displayer | Lens, Iron, Lamp | 80 x 80 x 180 cm | 2013

DOUBLE SQUARE GALLERY 双方藝廊

No.28, Ln. 770, Bei'an Rd., Zhongshan Dist., Taipei City 104, Taiwan (R.O.C.) 台灣台北市中山區北安路770巷28號 T +886 2 8501-2138 F +886 2 8501-2338
www.doublesquare.com.tw



Displayer Of Inner World | Lens, Iron, Lamp | 120 x 120 x 70 cm | 2013

DOUBLE SQUARE GALLERY 双方藝廊

No.28, Ln. 770, Bei'an Rd., Zhongshan Dist., Taipei City 104, Taiwan (R.O.C.) 台灣台北市中山區北安路770巷28號 T +886 2 8501-2138 F +886 2 8501-2338
www.doublesquare.com.tw

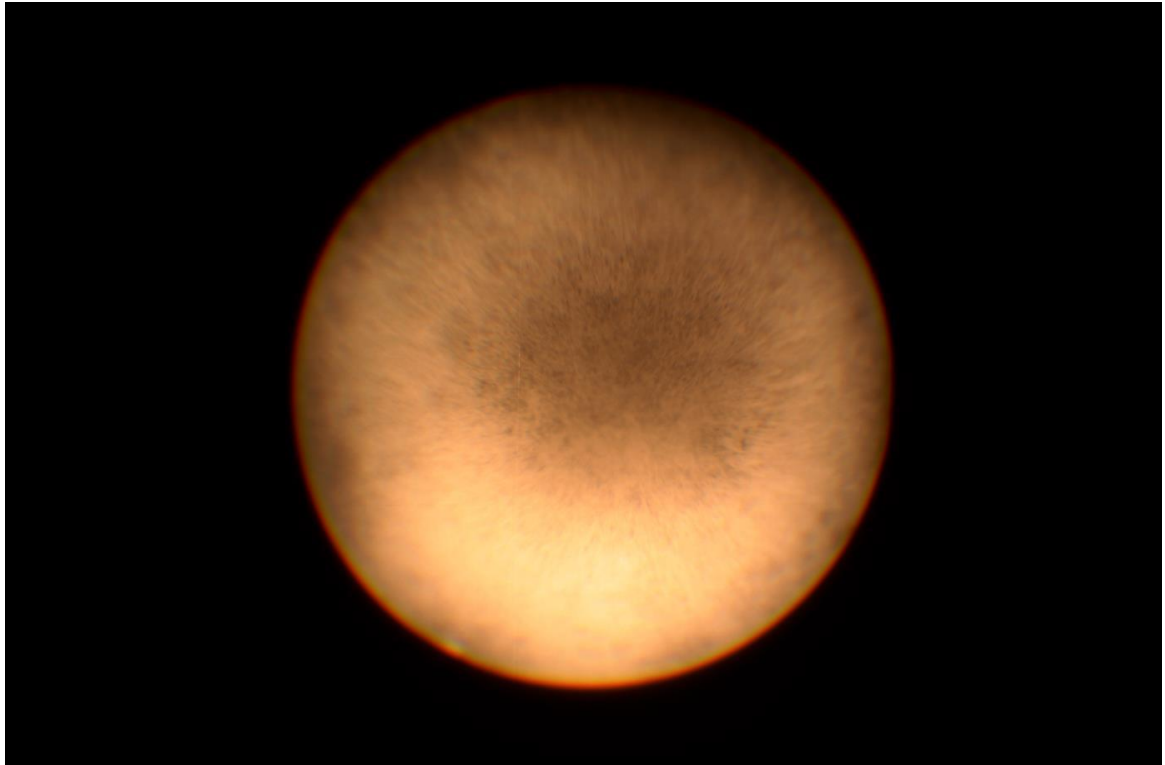


Panoramic View Of The Outside World | Lens, Iron | 200 x 200 x 190 cm |

2013

DOUBLE SQUARE GALLERY 双方藝廊

No.28, Ln. 770, Bei'an Rd., Zhongshan Dist., Taipei City 104, Taiwan (R.O.C.) 台灣台北市中山區北安路770巷28號 T +886 2 8501-2138 F +886 2 8501-2338
www.doublesquare.com.tw



No Appearance | Lens, Iron, Lamp, mechanical motor | 50 x 120 x 130 cm |

2013

DOUBLE SQUARE GALLERY 双方藝廊

No.28, Ln. 770, Bei'an Rd., Zhongshan Dist., Taipei City 104, Taiwan (R.O.C.) 台灣台北市中山區北安路770巷28號 T +886 2 8501-2138 F +886 2 8501-2338
www.doublesquare.com.tw



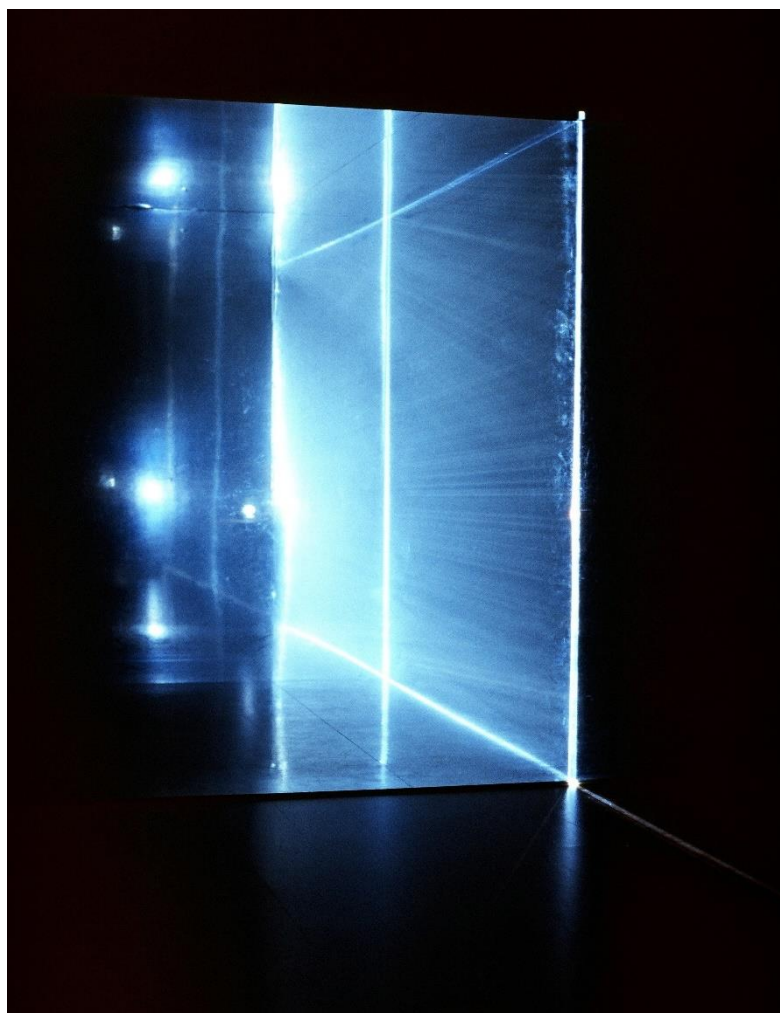
Membrane of Light 2 | Laser, motors, smoke machine | 450 x 450 x 1000
cm | 2009



Unconsciousness-Drifting speed: 300,000 kilometer per second | Projection
lamp, motor, smoke machine | 2500 x 2000 x 500 cm | 2006

DOUBLE SQUARE GALLERY 双方藝廊

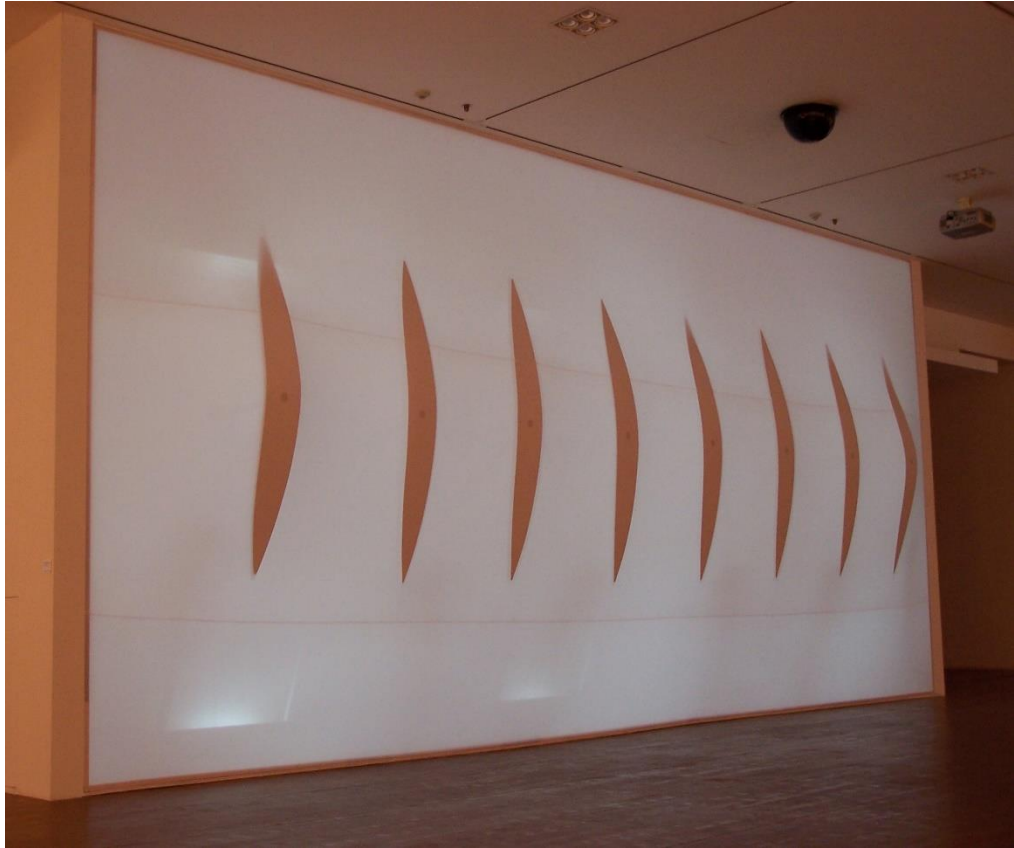
No.28, Ln. 770, Bei'an Rd., Zhongshan Dist., Taipei City 104, Taiwan (R.O.C.) 台灣台北市中山區北安路770巷28號 T +886 2 8501-2138 F +886 2 8501-2338
www.doublesquare.com.tw



Membrane of Light | Overhead projector, motor, smoke machine, mirrors,
glasses | Dimension variable | 2005

DOUBLE SQUARE GALLERY 双方藝廊

No.28, Ln. 770, Bei'an Rd., Zhongshan Dist., Taipei City 104, Taiwan (R.O.C.) 台灣台北市中山區北安路770巷28號 T +886 2 8501-2138 F +886 2 8501-2338
www.doublesquare.com.tw

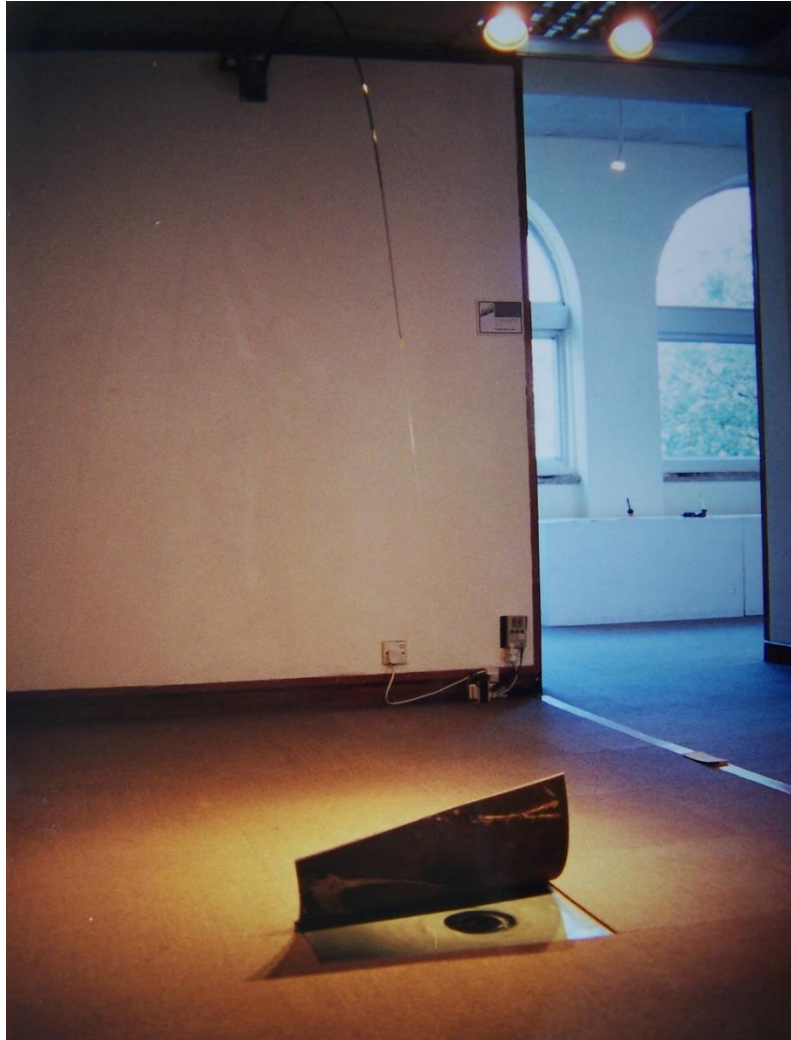


Take a Break 2 | Sensors, motors, light, stretch fabric | 1000 x 350 x 100 cm |

2005

DOUBLE SQUARE GALLERY 双方藝廊

No.28, Ln. 770, Bei'an Rd., Zhongshan Dist., Taipei City 104, Taiwan (R.O.C.) 台灣台北市中山區北安路770巷28號 T +886 2 8501-2138 F +886 2 8501-2338
www.doublesquare.com.tw



The Linear Space | fishing rod, fishing twine, mechanic installation, sensor, and
image | 300 x 450 x 50 cm | 2000

DOUBLE SQUARE GALLERY 双方藝廊

No.28, Ln. 770, Bei'an Rd., Zhongshan Dist., Taipei City 104, Taiwan (R.O.C.) 台灣台北市中山區北安路770巷28號 T +886 2 8501-2138 F +886 2 8501-2338
www.doublesquare.com.tw



Birth and Death | Sensors, motors, oil, acrylic, plastic, wood | 460 x 460 x 48
cm | 1998

DOUBLE SQUARE GALLERY 双方藝廊

No.28, Ln. 770, Bei'an Rd., Zhongshan Dist., Taipei City 104, Taiwan (R.O.C.) 台灣台北市中山區北安路770巷28號 T +886 2 8501-2138 F +886 2 8501-2338
www.doublesquare.com.tw

Art Reviews

DOUBLE SQUARE GALLERY 双方藝廊

No.28, Ln. 770, Bei'an Rd., Zhongshan Dist., Taipei City 104, Taiwan (R.O.C.) 台灣台北市中山區北安路770巷28號 T +886 2 8501-2138 F +886 2 8501-2338
www.doublesquare.com.tw

Face to face: Essays on artists and their works (Tao Ya-Lun)

Article | Sophie McIntyre

The only way to enter the deepest part of the spirit is to confront the body's feelings. -

- Tao Ya-Lun

Tao Ya-Lun is one of Taiwan's most recently acclaimed young artists. In his two and three dimensional mixed media automated installations, the artist focuses on the body as a site for self-exploration and self-expression. Driven by a desire to overcome self-consciousness, Tao explores the body which he views as a house where one's deepest psychological, sexual, and spiritual feelings reside, and where one will discover one's true identity.

In "Secret Sexuality" (1997), Tao explores the politics of sexuality in a society where traditional, conservative views about sexuality persist, this intriguing work questions social conventions and moral values, and brings the viewer to an awareness of his or her self. Here, the artist represents female genitalia through formal and material associations which invoke a subtle yet potent sexual tension. Stretching a piece of fine, and almost translucent elastic material over an elliptical shaped wooden frame, Tao then attaches a sensory motor to the inside of the structure. When triggered, this sensor slowly and repeatedly slides up and down. The eye of the viewer hypnotically follows this fleshy swelling through the material, becoming fully aware of the sexual reality of the structure. In reference to this work, Tao states, "sexuality is the intimate

bond between mind and body and is the root of self-consciousness."

"Breathing A Sigh" (1998) is a less emotive work, and is underpinned by a cool, controlled tension. In an effort to capture the slow, rhythmic movement of inhalation and exhalation, Tao has built a large, ovoid-shaped iron framework onto which soft, supple brown cloth is stretched so that the "ribs" of the framework protrude through the material. When the sensor is triggered by the viewer, the iron ribs rise and fall, like a breath, until the sensor ceases and the breath dies.

Utilizing various mechanical devices to create his works, Tao explores the sensory realm of human emotions and desire with a dispassionate critical focus. Here, the human anatomy is transformed into a machine with which the viewer interacts. Contained within a framework, the movement of the body is activated and regulated by the sensor. In these works, Tao adopts a minimalist but highly sophisticated vocabulary to produce an understated indictment of social and self-repression, which he considers creates internal conflict, and inhibits awareness of one's self.

TAO Ya Lun, Art is a Mechanism to Aid Understanding and Transcend the Difficulties of Our Own Existence

Article | Huang Hi-Ming

Artists seek to harness the power of technology to convey meaning as precisely as possible. In order to achieve this degree of precision it is necessary to make use of rational scientific practice together with the continued concentration and refinement of spirituality. The objective of this combination has little to do with technology itself, but is rather an attempt to understand the unconscious realignment of self. It also improves the precision with which one can express a complex whole faced with external stimuli. However, this degree of precision can only be achieved through a “direct holistic view,” which is highly sensitive and not restricted by the confines of linear logic and the assistance of special art forms is also necessary to infuse the process with life.

The artist’s works create a spatial arena that one can really enter it is real, but at the same time the pieces are also infused with allusion. At a minimum, one is able to temporarily focus on feelings, the relationship between the body/mind of the viewer, the complexity of the arena and the seeming reality of the changes whilst inside the piece. It is almost as though the primary purpose of his works is as an act of self-understanding or self-cultivation. Once the external form and tools have taken shape they are also able to help viewers achieve self-understanding and cultivation. It is very important to note that this also provides a “XXX” (全息感通) mechanism. To that end it can be said that the work is like a virtual machine, one that is able to help us

understand our own existence. For the artist, presenting an artistic expressive prototype that reveals the state of existence is itself a process of cultivation. His works give one a sense of directly viewing a lonely, dark space in another boundless imension. In this sense, the points of light and experience of sinking and floating are much more than the enriching of form.

HUANG Hi Ming (2006) "The research of the works of Tao Ya-lun" A dialog between contemporary art and contemporary philosophy Kuandu Museum of Fine Arts, Taipei